

SUBJECT

Wizard SMR (Self-Monitored Ready) Wiring Configuration Change with the Stanley Duraglide Sliding Door

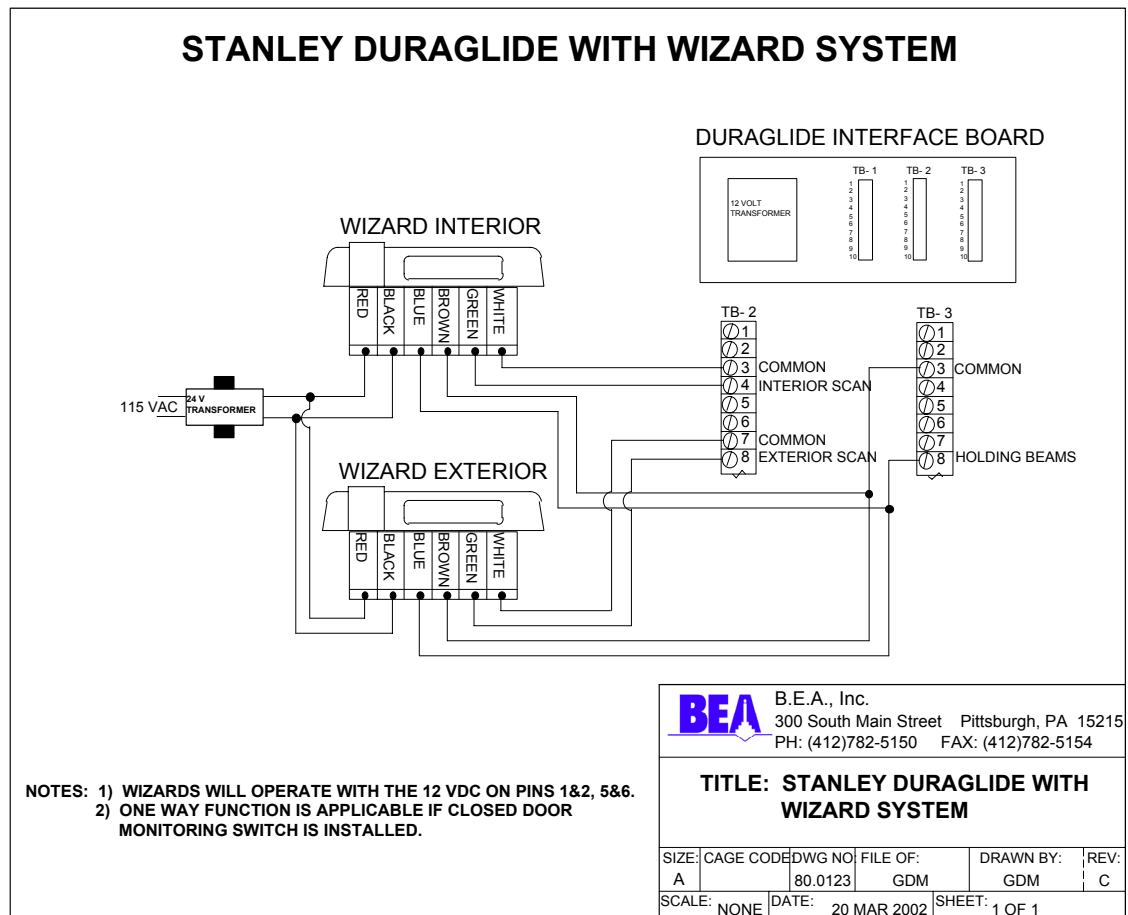
MAY 08, 2002

The purpose of the change is to accommodate for the differences in the Standard Rocker Switch package and the Rotary Switch package. The standard wiring provided with the Rotary Switch Package requires that the Wizard sensor system be wired as shown.

WIZARD WITH NEW STYLE STANLEY INTERFACE BOARD

When using the Stanley Rotary Switch on a Duraglide slider package with a newer style Stanley interface board, observe the following:

- The brown wire from the Wizard must be connected to terminal #3 (Common) on TB-3 of the interface.



COMPANY CONTACT

If after troubleshooting a problem, a satisfactory solution cannot be achieved, please call B.E.A., Inc. for further assistance during Eastern Standard Time at **1-800-523-2462 from 7am - 5pm.**
For after-hours, call East Coast: 1-866-836-1683 or 1-800-407-4545 / Mid-West: 1-888-308-8843 / West Coast: 1-909-596-3011. DO NOT leave any problem unresolved. If you must wait for the following workday to call B.E.A., leave the door inoperable until satisfactory repairs can be made.
NEVER sacrifice the safe operation of the automatic door or gate for an incomplete solution.