

USERS GUIDE

MC-11 LATCHING RELAY

Push To Open – Push To Close

PRODUCT DESCRIPTION

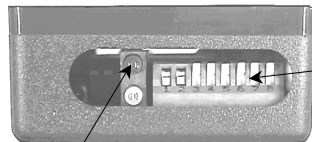
The MC-11 Latching Relay (PN: 10MC-11) provides the User with a latching relay action (sometimes referred to as a ratcheting relay). The purpose is to provide a maintained relay activation through a single input. Momentary closure on the two blue wires will result in the MC-11 being activated. This activation will not cease until the two blue wires are contacted with each other again.

The MC-11 can provide a dry (no voltage), or wet (voltage present) output as required by the application, and is accomplished through the positioning of 2 jumpers. When wet output is selected, the voltage output on the relay will equal the type and value that is present on the input (orange and brown wires).

TECHNICAL SPECIFICATION

DESCRIPTION	SPECIFICATION
Power Supply	12 to 24 VAC/ 15 to 24 VDC
Power Consumption	50mA max.
Operating Frequency	4 MHz Microprocessor
Output	SPDT Relay
Max. Voltage – Relay Contacts	60 VDC, 120 VAC
Max. Current – Relay Contacts	5A DC, 0.5A AC

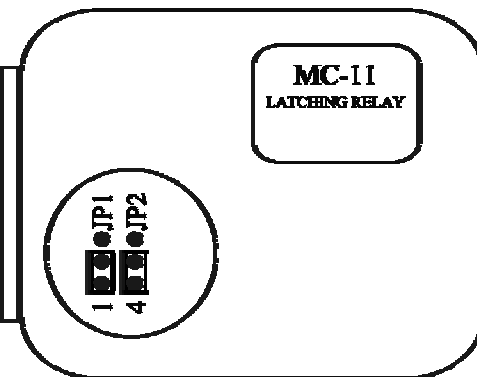
COMPONENT ID



Dipswitches are not used

Red LED: When illuminated, indicates a state of activation.

- Input Contact COM. from activating device** ■ Blue
- Input Power 12 to 24 VAC/15-24 VDC** ■ Orange
- Input Contact N.O. from activating device** ■ Blue
- Input Power 12 to 24 VAC/15-24 VDC** ■ Brown
- Relay I COM.** ■ Red
- Relay I N.O.** ■ Black
- Relay I N.C.** ■ Purple



SAFETY PRECAUTIONS



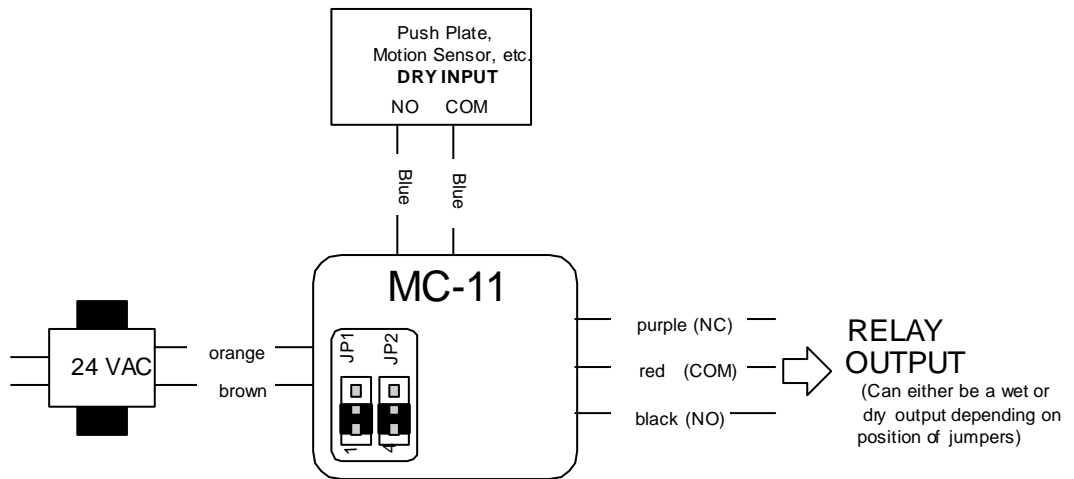
- Shut off all power going to the header before attempting any wiring procedures.
- Maintain a clean & safe environment when working in public areas.
- Constantly be aware of pedestrian traffic around the door area.
- Always stop pedestrian traffic through the doorway when performing tests that may result in unexpected reactions by the door.
- Always check placement of all wiring before powering up to insure that moving door parts will not catch any wires and cause damage to equipment.
- Ensure compliance with all applicable safety standards (i.e. ANSI A156.10) upon completion of installation.

TYPICAL APPLICATION

WIRE CONNECTIONS	
Orange	Power input / 12-24 VAC or 15-24 VDC (-)
Brown	Power input / 12-24 VAC or 15-24 VDC (+)
Blue	Input contact COM from activation device
Blue	Input contact NO from activation device
Purple	Relay 1 NC contact
Red	Relay 1 COM contact (+ when wet output)
Black	Relay 1 NO contact



CAUTION: Unused wires must be insulated to prevent damage to the unit. No voltage should be applied to the blue wires or damage to the unit will result.

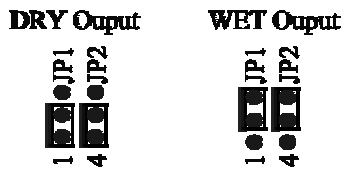


JUMPER SETTINGS

JUMPERS

The jumpers on the MC-11 can be configured for a dry relay output or a wet relay. If configured for a wet relay output, the output voltage on the relay will equal the input voltage on the orange and brown wire of the module. Voltage and type (AC or DC) will match. **If the jumpers are placed diagonal from each other the MC-10 module will not function correctly.**

- Both jumpers on the left and middle pins (1&2 and 4&5) = DRY OUTPUT
- Both jumpers on the right and middle pins (2&3 and 5&6) = WET OUTPUT



COMPANY CONTACT

If after troubleshooting a problem, a satisfactory solution cannot be achieved, please call B.E.A., Inc. for further assistance during **Eastern Standard Time at 1-800-523-2462 from 8am - 5pm.** For after-hours, call East Coast: 1-866-836-1863 or 1-800-407-4545 / Mid-West: 1-888-308-8843 / West Coast: 1-888-419-2564. **DO NOT leave any problem unresolved.** If you must wait for the following workday to call B.E.A., leave the door inoperable until satisfactory repairs can be made. **NEVER sacrifice the safe operation of the automatic door or gate for an incomplete solution.**
Web: www.beainc.com