



PBDGP1: Perfect for vestibule application solutions

This Vestibule plate provides an aesthetically pleasing solution for vestibule applications, providing a way to open both doors independently of one another.

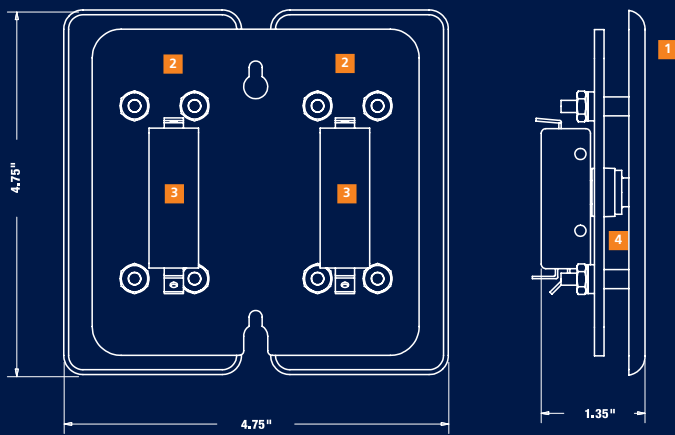
A Plate Revolution, Now!

www.beasensors.com

PBDGP1 Series

Stainless Steel Dual Switch Push Plates

- Rather than having 2 push plates, the PBDGP1 series provides an aesthetically pleasing solution to the vestibule application.
- Energy conservation is a huge benefit to this product, as it only opens necessary doors.
- Beveled edges provide a tamper and vandal proof solution to your push plate needs, allowing no room to get objects between plate and box
- An all-active plate activates with any "push" location
- Stainless steel finish will not deteriorate/rust where it is touched and is scratch and scuff resistant
- Text and logo are baked onto the surface for leading durability
- Screws come in multiple sizes (#6 & #8), which fit both single and double gang mounting boxes
- Weather boot between plate and back plate for all weather applications
- Lifetime warranty allows you to save money in the long run
- Can be mounted on BEA's Bollard



Components

- 1 Jamb Style Push Plates
- 2 Back Plate
- 3 Cherry Switches
- 4 Weatherboot

Technical Specifications/ Mounting Hardware

- la. 16 gauge, 304 2B Stainless Steel Faceplate
- b. 1/8" thick, Aluminum Backplate
- c. Stainless Steel 6-32 x 1" and 8-32 x 1" Allen head mounting screws
- d. Cherry Switch: Single-pole, 15A, COM/ NO/ NC contacts
- e. 5/64" Allen key removes both 6-32 and 8-32 mounting screws
- f. Powdercoat then clear coated faceplates available on certain styles
- g. Wire nuts

Custom Specifications

BEA proposes a variety of custom solutions for your push plates:

Abrasive Etching/Engraved – This method creates a very accurate and deep "scratch" in the plate that is then filled with paint to create the custom logo/text on the surface of the plate.

Pad Printed – Logo/text is stamped onto the surface of the steel plate using a special pad. The logo is only printed on the surface of the plate.

Embossing – This process requires the use of a special tool designed to punch the back of the face plate with the custom information. A special coating is added to create a dramatic 3D embossing for your push plate.

Contact Information

BEA Inc.
 RIDC Park West
 100 ENTERPRISE DRIVE
 PITTSBURGH, PA 15275

PHONE 1-412-249-4100
 FAX 1-888-523-2462
 TOLL FREE 1-800-5 BEA INC

BEA West
 190 East
 Arrow Highway Suite A
 San Dimas, CA 91773-3314
 FAX 1-888-523-2462
 TOLL FREE 1-877-232-9378

www.beasensors.com

PBDGP1Series



10PBDGP1

Mounting Components



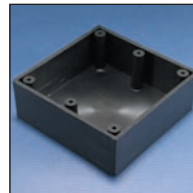
10BOX475SQFM
 Square Flush Mount Box



10BOX475SQSM
 Round Surface Mount Box



10BOXDG45C
 Double Gang
 Mount Box



10BOXDG4H
 Double Gang
 Mount Box



10BOLLARD