



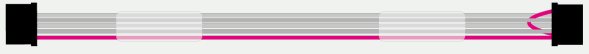
APPLICATION NOTE

LZR®-FLATSCAN SW GLASS DOOR ACCESSORY


This Application Note applies to the following BEA Products: LZR®-FLATSCAN SW

This procedure is intended for glass-door applications and, therefore, requires adhesion rather than drilling, and special routing of the cable.

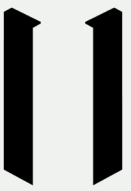
Accessory components:



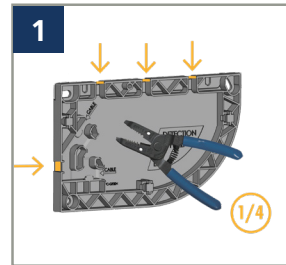
Flat master-slave cable



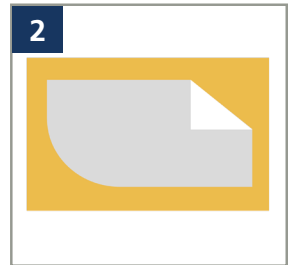
Stickers



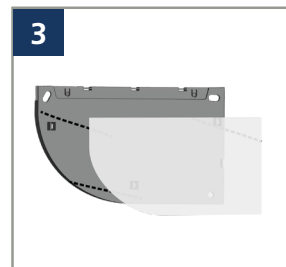
Cable covers



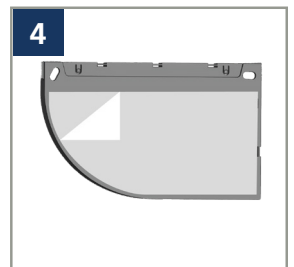
1 Remove one cable pass-thru notch.



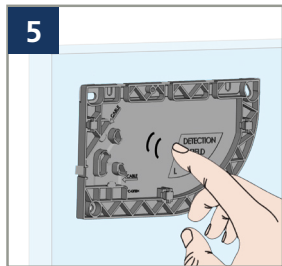
2 Remove the sticker from the sticker backing sheet.



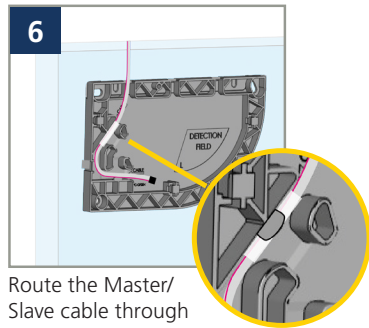
3 Adhere the sticker to the back of the mounting base, aligning the two shapes.



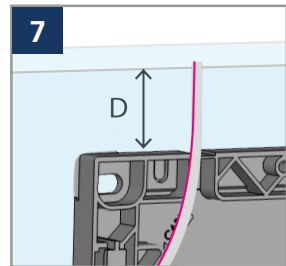
4 Remove the sticker liner from the sticker.



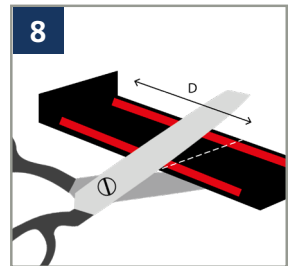
5 Align the mounting base, and then press the base to the glass to adhere.



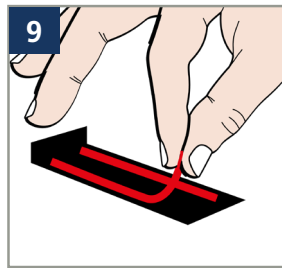
6 Route the Master/Slave cable through the pass-thru notch.



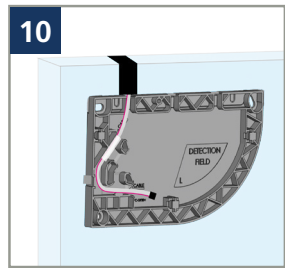
7 Measure the distance from the edge of the door to the edge of the mounting base (D).



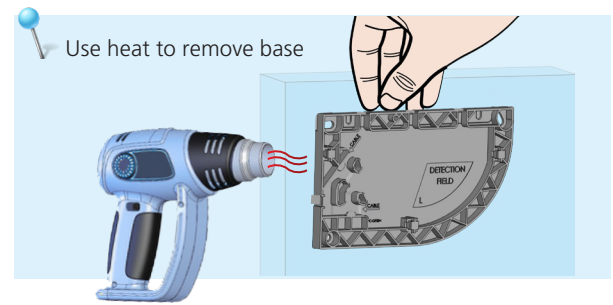
8 Cut the cable cover to match the measurement (D).



9 Remove the adhesive backing.



10 Place the cable cover over the cable and door, as shown.



Use heat to remove base